

COMMUNE DE SARP



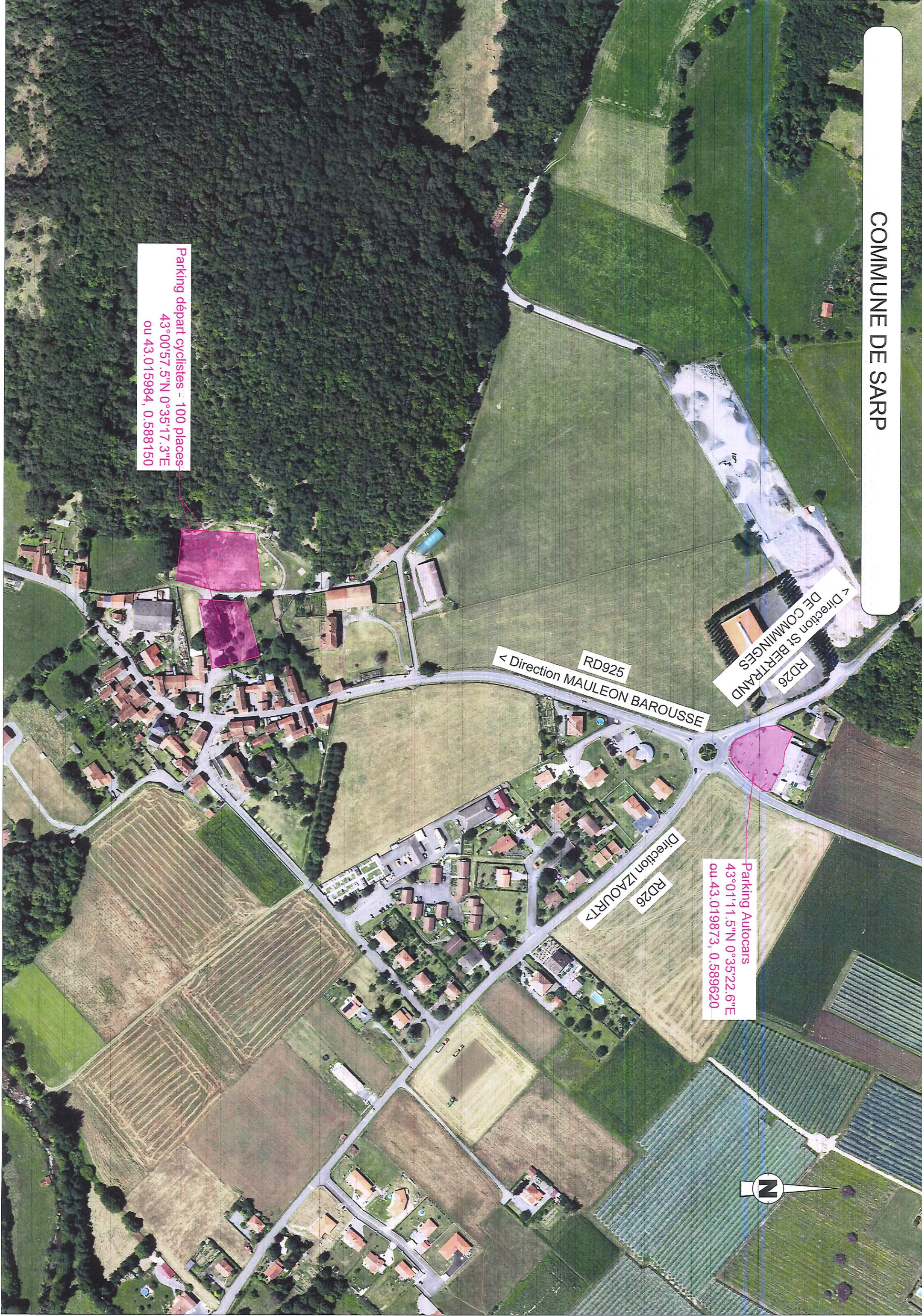
Parking Autocars  
43°01'11.5"N 0°35'22.6"E  
ou 43.019873, 0.589620

< Direction St BERTRAND  
DE COMMINGES  
RD26

RD925  
< Direction MAULEON BAROUSSE

RD26  
Direction IZAOURT >

Parking départ cyclistes - 100 places  
43°00'57.5"N 0°35'17.3"E  
ou 43.015984, 0.588150





COMMUNE DE TROUBAT

RD925

Direction TROUBAT >

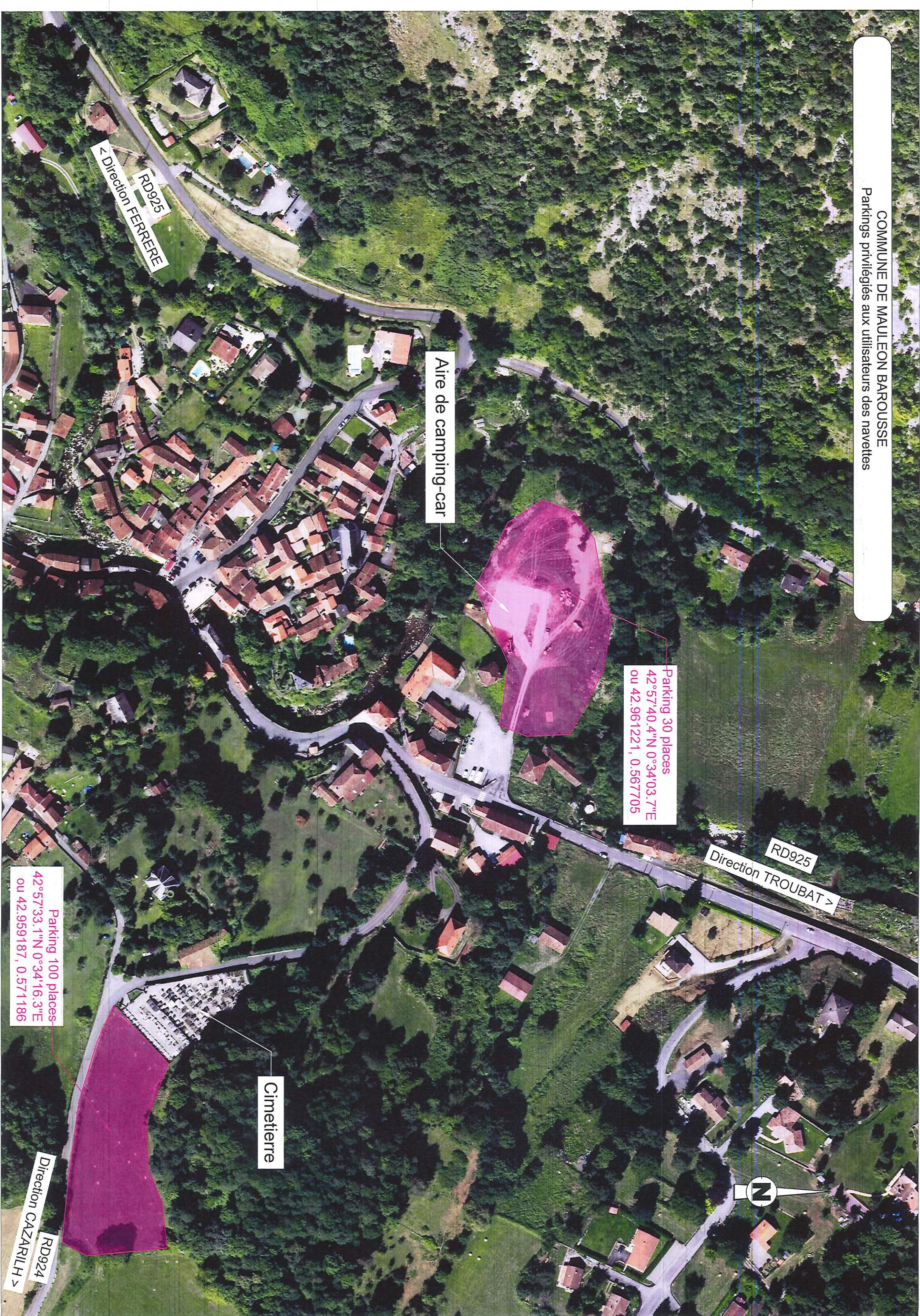
RD925

< Direction MAULEON BAROUSSE

Parking 100 places  
42°57'54.4"N 0°34'24.3"E  
ou 42.965110, 0.573407







Parking 30 places  
42°57'40.4"N 0°34'03.7"E  
ou 42.961221, 0.567705

Parking 100 places  
42°57'33.1"N 0°34'16.3"E  
ou 42.959187, 0.571186

Aire de camping-car

Cimetierre

RD925  
< Direction FERRERE

RD925  
Direction TROUBAT >

RD924  
Direction CAZARILH >







RD925  
Direction MAULEON BAROUSSE >

Parking 50 places  
42°56'04.7"N 0°30'40.5"E  
ou 42.934633, 0.511249

Chalets de Saint-Nérée

RD925  
< Direction PORT DE BALES

